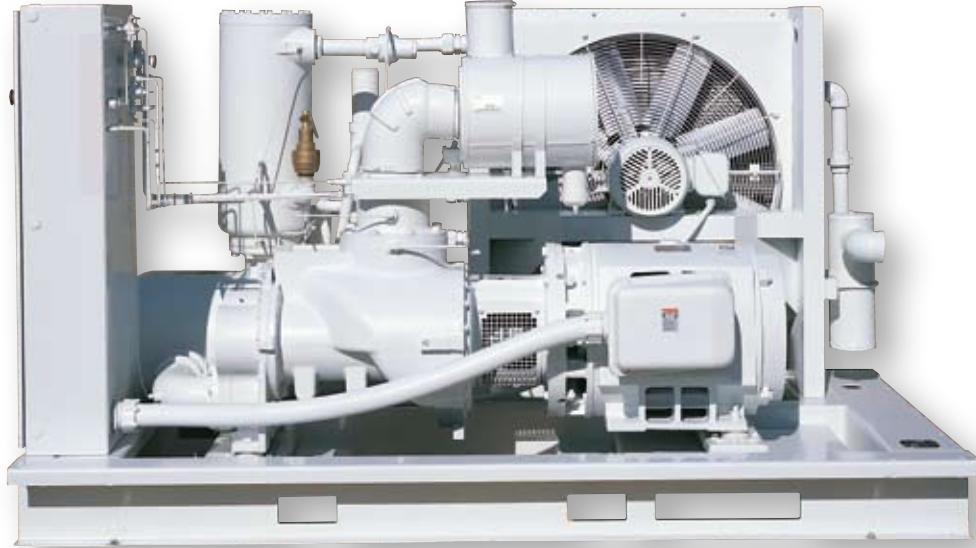


Rotary Screw Air Compressors **Electra-Saver®**



125–200 HP, SAV 125/150/200 Variable Displacement Control

Turn Valve Part Load Technology

- The patented Turn Valve is the most efficient part load capacity control system in the industry.
- Kypho™ rotor design, coupled with Turn Valve technology can reduce energy costs as much as 16%.
- Precision milled, robust, high strength ductile iron rotors ensure durability.

Direct Drive Non-Geared Airend

- Increased bearing life (L-10 life in excess of 100,000 hours) due to large tapered roller bearings.
- Permanent air end to motor connection via rigid flange connection for vibration-free operation.

Maintenance Reducing Design Features

- Simplified access to air/oil separator, requiring removal of only twelve bolts and no piping to change separator elements. This reduces maintenance time by 90%!
- Easy access to air filter mounted directly to the inlet valve.
- Spin-on ten micron full-flow oil filters ensure longer lubricant life and protection for all working parts.

Heavy Duty Inlet Air Filter

- Standard canister-type filter on Electra-Saver units; usually an option with other manufacturers.
- Removes 99.9% of airborne particulates five microns and larger.
- Extends lubricant life by almost 20%.

Auto Sentry® ES+ Solid State Electronic Controller

- Most sophisticated, technically advanced microprocessor based control system in the compressor industry.
- Every control option available in the industry is standard on the Gardner Denver Auto Sentry® ES+ controller.
- More self-diagnostic capability than any other rotary screw compressor.
- Built-in ability to sequence up to eight compressors.
- User friendly readout. No codes to decipher. Digital and full text Vacuum Fluorescent Display (VFD).

Technical Data, Direct Drive

SAV 125–200 HP

Motor power	Hz	Style	Model	Rated Pressure		Capacity at Rated Pressure*		Approximate Dimensions			Net weight			
				psig	bar	acfm	m ³ /min		Length	Width	Height		with Enclosure	Less Enclosure
125	60	SAV 125	EAQ	100	6.9	614	17.39	in mm	114 2896	68 1727	69 1753	lb kg	5500 2475	5200 2357
				125	8.6	530	15.01							
				150	10.3	445	12.60							
125	60	SAV 125 DX	EAQ	100	6.9	470	13.31	in mm	114 2896	68 1727	69 1753	lb kg	5500 2475	5200 2357
				110	7.5	468	13.25							
				125	8.6	465	13.17							
				150	10.3	460	13.03							
125/93	50	SAV 125	EAQ	100	6.9	594	16.82	in mm	114 2896	68 1727	69 1753	lb kg	5500 2475	5200 2357
				125	8.6	480	13.59							
				150	10.3	418	11.84							
150	60	SAV 150	EAQ	100	6.9	726	20.56	in mm	114 2896	68 1727	69 1753	lb kg	5500 2475	5200 2357
				125	8.6	608	17.22							
				150	10.3	518	14.67							
150/112	50	SAV 150	EAQ	100	6.9	681	19.28	in mm	114 2896	68 1727	69 1753	lb kg	5500 2475	5200 2357
				125	8.6	590	16.71							
				150	10.3	476	13.48							
200	60	SAV 200 DX	EAQ	100	6.9	760	21.52	in mm	114 2896	68 1727	69 1753	lb kg	5500 2475	5200 2357
				125	8.6	752	21.29							
				150	10.3	745	21.10							
200	60	SAV 200 DD	EAU-DD	100	6.9	974	27.58	in mm	114 2896	68 1727	69 1753	lb kg	5500 2475	5200 2357
				125	8.6	832	23.56							

* Capacity measured in accordance with CAGI/PNEUROP acceptance test code PN2CPTC2.

** Noise level measured in accordance with ISO 2151.

1. Full package performance with ICFM (m³/min) measured at the terminal discharge of the package in accordance with CAGI/PNEUROP acceptance test code PN2CPTC2.
2. Dimensions shown are nominal for all unenclosed models and for quiet enclosed water cooled models. Width on all quiet enclosed air cooled models is 90" (2286 mm).
3. Weights shown are for air cooled models less shipping skid. Water cooled models weigh slightly less.

Standard Equipment

- Automatic Turn Valve capacity control
- Direct drive, non-geared, D-flange mounted airend
- 460 volt, 3 phase, 60 HZ, 1800 RPM, 1.15 S.F., EPAAct "energy efficient" ODP drive motor, or 380/415 volt, 3 phase, 50 HZ, 1500/3000 RPM, 1.15 S.F., ODP D-flange drive, Star-Delta motor with standard 5-year warranty.
- DX model includes oversized drive motor not running into the service factor at 110/125 PSIG
- Heavy duty, five micron, dry canister inlet air filter direct mounted to the vertical inlet valve
- Airend and motor shafts coupled through a permanently aligned, resilient cushion-type flexible coupling
- Unitized airend-motor assembly mounted to the compressor base with all-angle, elastomer, vibration isolators
- Heavy duty, all welded steel base with fork lift slots
- ASME coded air/oil accumulator with Gardner Denver® Eliminator™ separator element

- Oil cooler/aftercooler:
 - Air cooled models—heavy duty radiator-type with thermally controlled, totally enclosed fan motor
 - Water cooled models—shell and tube-type heat exchanger
- Thermostatic oil mixing valve
- Package mounted moisture separator and trap
- Ten micron, full flow, oil filter
- Pressure relief valve
- Automatic blowdown valve through inlet filter
- Minimum discharge pressure/check valve
- Stainless steel control line tubing
- Factory fill with AEON® 9000SP synthetic lubricant
- Auto-Sentry® ES+ microprocessor based, fully programmable touch pad controller with the following functions:
 - Full text Vacuum Florescent Display (VFD) with interactive compressor diagram
 - Operating mode selection: constant run, low demand with reservoir blowdown, automatic stop/start with timed blowdown and sequence (up to 8 units), all with modulating

- inlet valve or load/no load control
- Emergency stop button
- Complete system diagnostics through VFD
- Displays for hourmeter, loaded hours, total runtime, discharge air temperature, system/reservoir pressure, separator differential pressure and motor amps
- VFD Advisory lamps, light yellow on diagram, displays service for air filter, change separator, oil and oil filter change, low/high temperature, sequencing communication error, and high motor amps
- VFD Protective shutdown lamps, light red on diagram, displays high temperature, low oil pressure, main motor overload, fan motor overload, high pressure, change separator, choice of one field-selectable message: high vibration, phase relay, motor protector, low voltage
- Power interruption protection

- High speed electronic modulation control
- Thermally controlled fan motor on air cooled units
- Contacts for remote start/stop operation plus remote monitoring

Optional Equipment

- Automatic water temperature regulator (on water cooled units)
- Magnetic water control valve (on water cooled units)
- NEMA 4 (IP 66) control enclosure
- Seacoast (air-cooled) or Saltwater (water-cooled) coolers
- Remote or remote elevated air cooled oil cooler and aftercooler
- Full acoustic enclosure with access doors
- Alternate voltages, TEFC and high efficiency motors
- Factory fill AEON® 6000FG Food Grade Lubricant
- Factory fill AEON® 9000TH High Temperature Lubricant
- Factory fill AEON® BIO Biodegradable Lubricant

Gardner Denver®

www.GardnerDenverProducts.com maggie@gardnerdenver.com

Gardner Denver Compressor Division 1800 Gardner Expressway, Quincy, IL 62305
Customer Service Department Telephone: (800) 682-9868 FAX: (217) 224-7814

